



## SHANGHAI EVAN FLOW CONTROL CO.,LTD.

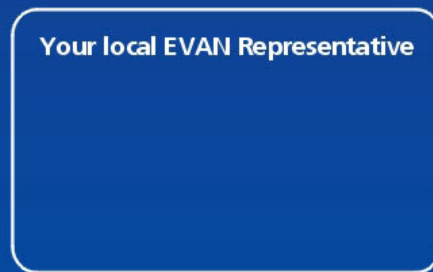
Add: 405-No.2199 Qilianshang Rd.S, Jiading District,  
Shanghai, China

Tel/Fax: +86-21 5679 6985

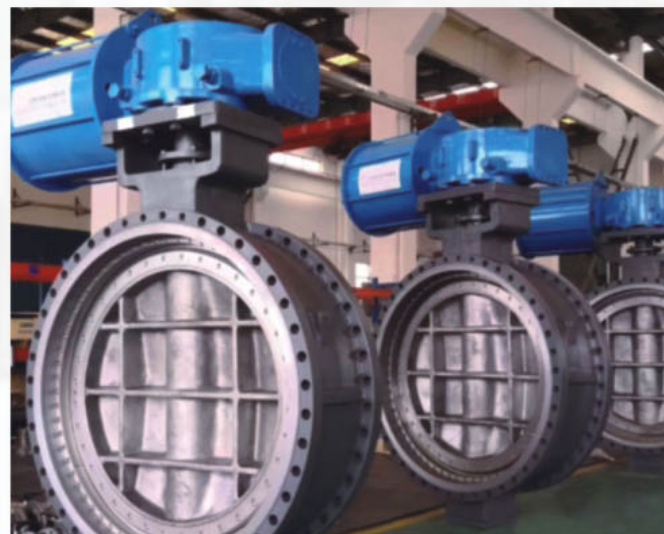
<http://www.evaflows.com>

E-mail: [service@evaflows.com](mailto:service@evaflows.com)

Your local EVAN Representative



## Butterfly Valve



## About EVAN

Shanghai EVAN Flow Control Co., Ltd.(EVAN) is an enterprise integrating design, manufacturing and sales of fluid equipment products. The company mainly provides professional technical support to domestic and foreign customers, and provides forged and cast multi turn and quarter turn alloy, stainless steel and copper alloy valves (such as GGC valve, ball valve, strainer, cryogenic GGC valve , ball valve and butterfly valve, Double block and bleed valve, etc.) According to API standard and EN standard, So as to meet the requirements of various fields and working conditions and customized various special and harsh application areas according to customer requirements.

We have been embracing the concept of "win-win cooperation" and looking for partners in various regions of the world to work together.



## Handle Soft Seal Butterfly Valve

### Product Usage

Butterfly valve installed in the diameter of the pipeline direction. In the butterfly valve body cylindrical channel, the disc-shaped disc rotates about the axis, the rotation angle is between  $0^{\circ}$  ~  $90^{\circ}$ , when rotated to  $90^{\circ}$ , the valve is fully open state card. The characteristics of the new high-life stainless steel butterfly valve and butterfly valve in the course of the existence of problems, this type of valve in the pipeline should be generally horizontal installation.

- Nominal diameter: DN50~DN1200
- Nominal pressure: 1.0~2.5MPa
- Applicable temperature:  $-40\sim 200^{\circ}\text{C}$
- Applicable medium: Water, steam, oil, Acetic acid



## Soft Seal Turbine Butterfly Valve

### Product Usage

Butterfly valve installed in the diameter of the pipeline direction. In the butterfly valve body cylindrical channel, the disc-shaped disc rotates about the axis, the rotation angle is between  $0^{\circ}$  ~  $90^{\circ}$ , when rotated to  $90^{\circ}$ , the valve is fully open state card. The characteristics of the new high-life stainless steel butterfly valve and butterfly valve in the course of the existence of problems, this type of valve in the pipeline should be generally horizontal installation.

- Nominal diameter: DN50~DN1200
- Nominal pressure: 1.0~2.5MPa
- Applicable temperature:  $-40\sim 200^{\circ}\text{C}$
- Applicable medium: Water, steam, oil, Acetic acid

## Wafer Butterfly Valve

### Product Usage

D373H, D373Y butterfly valve with precision J-shaped elastic seal and three eccentric multi-layer metal hard seal structure, is widely used in the dielectric temperature  $\leq 425^{\circ}\text{C}$  gold, electricity, petrochemicals, as well as water supply and municipal construction Industrial piping, for regulating the flow and breaking the fluid to use.

- Nominal diameter: DN50~DN1000
- Nominal pressure: 1.0~4.0MPa
- Proper temperature:  $\leq 300^{\circ}\text{C}$
- Suitable media: Water, steam, oil, Acetic acid



## Triple Eccentric Butterfly Valve

### Product Description

The triple eccentric flanged butterfly valve in EVAN VALVE can be designed with one-way sealing or two-way sealing structure, and the torque is small. The valve conforms to API, GB, ISO related standards. The metal seal seat can be applied to all kinds of harsh working conditions, its eccentric design makes the seal pair separate instantly as soon as the valve opens, the seat friction is less, the service life of the valve is greatly improved, and at the same time, it has the natural fireproof characteristic. It is widely used in the truncation and adjustment of all kinds of pipeline fluids.

- Size: 2" ~ 120" (DN50~DN3000)
- Rating: ASME Class 150~1500
- Design Std.: API 609 GB/T12238
- Body material: Carbon steel, stainless steel, alloy steel and duplex steel
- Connection: Wafer, LUG, RF, BW
- Operation: Gear, electric, pneumatic, hydraulic





### High Pressure Butterfly Valve

#### Product Usage

D343H, D343W three eccentric multi-level hard-seal butterfly valve is widely used in metallurgy, electric power, petroleum, chemical, air, gas, combustible gases and pipes for corrosive media such as water supply and drainage.

- Nominal diameter: DN50-DN4000
- Nominal pressure: 2.5-6.4MPa
- Applicable temperature:  $\leq 425^{\circ}\text{C}$
- Applicable medium: Water, oil or non-corrosive, Nitric acid, Acetic acid



### Stainless Steel Flange Butterfly Valve

#### Product Usage

D343W three eccentric multi-level stainless steel butterfly valve seal is widely used in metallurgy, electricity, petroleum, chemicals, air, gas, combustible gas and water supply and drainage and other corrosive media pipeline.

- Nominal diameter: DN50-DN4000
- Nominal pressure: 1.0-2.5MPa
- Applicable temperature:  $\leq 425^{\circ}\text{C}$
- Applicable medium: Water, oil or non-corrosive, Nitric acid, Acetic acid

### Bidirectional Metal Hard Touch Hard Butterfly Valve

#### Product Usage

D363H, D363W type three partial metal hard-impact hard seal butterfly valves are widely used in metallurgy, electric power, petroleum, chemical industry, air, gas, combustible gas and water supply and drainage pipelines with corrosive media.

- Nominal diameter: DN50-DN4000
- Nominal pressure: 1.0-2.5MPa
- Applicable temperature:  $\leq 425^{\circ}\text{C}$
- Applicable medium: Water, oil or non-corrosive, Nitric acid, Acetic acid



### Bidirectional Butt Welding Butterfly Valve

#### Product Description

Three eccentric two-way metal seal welding butterfly valve is widely used in water conservancy projects, water, electricity circulating water, oil, chemicals and other industrial pipe for cutting off the flow of media.

- Nominal diameter: DN100-DN2000
- Nominal pressure: 1.0-4.0MPa
- Applicable temperature:  $\leq 425^{\circ}\text{C}$
- Applicable medium: Water, oil or non-corrosive, Nitric acid, Acetic acid





### Pneumatic Butterfly Valve

#### Product Description

D643H, D643W pneumatic three eccentric multi-level hard-seal butterfly valve is widely used in metallurgy, electricity, petroleum, chemicals, air, gas, combustible gas and water supply and drainage and other corrosive media pipeline.

- Nominal diameter: DN50~DN4000
- Nominal pressure: 1.0~2.5MPa
- Applicable temperature:  $\leq 425^{\circ}\text{C}$
- Applicable medium: Water, oil or non-corrosive, Nitric acid, Acetic acid



### Electric Butterfly Valve

#### Product Description

D943H, D943W electric three eccentric multi-level hard-seal butterfly valve is widely used in metallurgy, electricity, petroleum, chemicals, air, gas, combustible gases and pipes for corrosive media such as water supply and drainage.

- Nominal diameter: DN50~DN4000
- Nominal pressure: 1.0~2.5MPa
- Applicable temperature:  $\leq 425^{\circ}\text{C}$
- Applicable medium: Water, oil or non-corrosive, Nitric acid, Acetic acid

### Special Butterfly Valve for Coal Gas

#### Product Description

Coal gas butterfly valve is a commonly used in the metallurgical, chemical and other fields in the ventilation pipe, is mainly responsible for containing dust cold, hot air flow, flow regulation and cut off, Gas butterfly valves are made of welded center plate and steel plate, compact structure, light weight. the corridor to bring gas corrosion and destruction have a stronger resistance.

- Nominal diameter: DN50~DN1000
- Nominal pressure: 1.0~2.5MPa
- Applicable temperature:  $\leq 425^{\circ}\text{C}$
- Applicable medium: Containing dust cold hot air flow



### Aeration Butterfly Valve

#### Product Description

D341H, D341W PN0.5 ~ PN1 ventilation butterfly valve regulates the flow or cut-off device as a gas medium in dusty cold air or hot-air gas pipes for ventilation and environmental projects in metallurgy, chemical industry, building materials, power plants and glass industries.

- Nominal diameter: DN300~DN4000
- Nominal pressure: 0.05~0.1MPa
- Applicable temperature:  $-30 \sim 350^{\circ}\text{C}$
- Applicable medium: Hot and cold wind, smoke





## Double Eccentric Butterfly Valve

### Product Description

The double eccentric butterfly valve in EVAN VALVE is designed with the seat structure of elastic pressure self-sealing, the products comply with API, GB, ISO related standards. With two-way zero leakage and lower torque, drive procurement costs are reduced. The cam-effect sealing structure makes the valve open at a certain angle and separates the seat from the disc, reduces friction, greatly improves the service life of the valve, and is widely used in the truncation and regulation of all kinds of pipeline fluids.

- Size: 2"~120" (DN50~DN3000)
- Rating: ASME CLASS 150~600 (PN16~PN100)
- Design Std.: API 609 GB/T 12238
- Body material: Carbon steel, stainless steel, alloy steel and duplex steel
- Connection: Wafer, LUG, RF
- Operation: Manual, gear, electric, pneumatic, hydraulic



## High Performance Butterfly Valve

### Product Description

The high performance butterfly valves in EVAN VALVE possess characteristics of two-way zero leakage and small torque, the products comply with API, GB, ISO related standards. The metal seal seat can be applied to all kinds of harsh working conditions, its eccentric design makes the seal pair separate instantly as soon as the valve opens, the seat friction is less, the service life of the valve is greatly improved, and at the same time, it has the natural fireproof characteristic. It is widely used in the truncation and adjustment of all kinds of pipeline fluids.

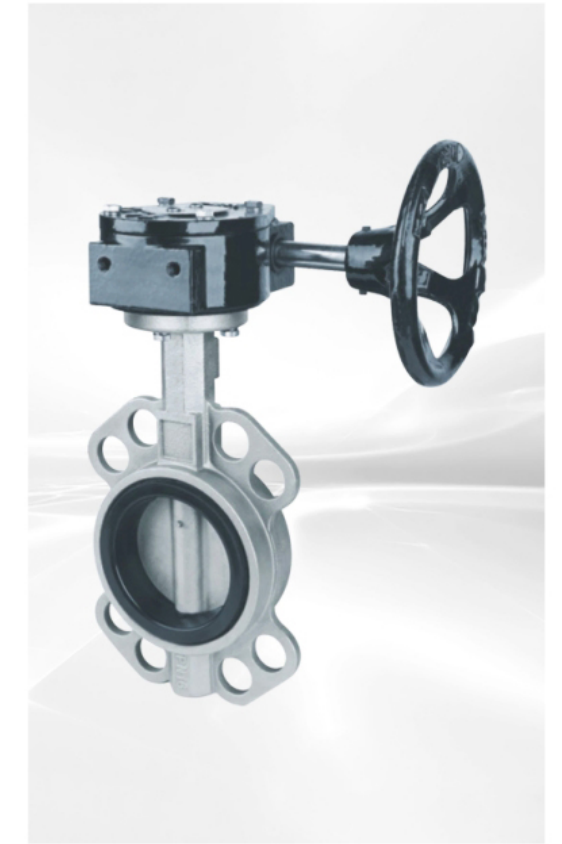
- Size: 2"~60" (DN50~DN1500)
- Rating: ASME Class 150~1500
- Design Std.: API 609 GB/T 12238
- Body material: Carbon steel, stainless steel, alloy steel and duplex
- Connection: Wafer, LUG, RF, BW
- Operation: Gear, electric, pneumatic, hydraulic

## Rubber Lined Butterfly Valve

### Product Description

The soft seal rubber lined concentric butterfly valves in EVAN VALVE have the function of switching, and adjusting the fluid, which comply with API, GB, ISO standards. It is widely used in the control of various industrial fluids. The body that fully coated with fluoroplastics is completely isolated from the medium, so it is suitable for all kinds of corrosive conditions. And compared with traditional gate valves, globe valves and ball valves, it is light weight and low cost. With the rapid development of various kinds of artificial rubber industry, soft seal elastic seat can be used not only in traditional water treatment industry, but also in modern chemical industry.

- Size: 2"~72" (DN50-DN1800)
- Rating: PN6~PN16
- Design Std.: API 609 GB/T 12238
- Body material: Ductile iron, cast steel, stainless steel
- Connection: Wafer, LUG, RF
- Operation: Lever, gear, electric, pneumatic, hydraulic



## Fluorine Butterfly Valve

### Product Description

The soft seal fluorine concentric butterfly valves in EVAN VALVE have the function of switching, and adjusting the fluid, which comply with API, GB, ISO standards. It is widely used in the control of various industrial fluids. The body that fully coated with fluoroplastics is completely isolated from the medium, so it is suitable for all kinds of corrosive conditions. And compared with traditional gate valves, globe valves and ball valves, it is light weight and low cost. With the rapid development of various kinds of artificial rubber industry, soft seal elastic seat can be used not only in traditional water treatment industry, but also in modern chemical industry.

- Size: 2"~72" (DN50-DN1800)
- Rating: PN6~PN16
- Design Std.: API 609 GB/T 12238
- Body material: Ductile iron, cast steel, stainless steel
- Connection: Wafer, LUG, RF
- Operation: Manual, gear, electric, pneumatic, hydraulic

